

Uchida Booklet Trimmer



UT-3100

Our trimmer is now available to complete a system for bookletmaking by Uchida. Thanks to the high processing speed, over 2,500 booklets/hour can be produced by Uchida system of Collating machine, Bookletmaking machine and UT-3100 trimmer.

UT-3100

Maximum Paper size	350 (W) x 225(L) mm (13.8" x 8.9")
Minimum paper size	120 (W) x 105(L) mm (4.7" x 4.1")
Speed	2,500sets/hour(A4/letter size 80g/m ² offset paper) when connected with bookletmaker
Maximum paper thickness	48sheets(80g/m ² Offset paper)
Paper quality	45g/m ² - 250g/m ² Offset, Recycle, Art, Coated, NCR Paper
Cutting Margin	0-10mm(0"-3.94") (A5 size : Maximum 5mm(1.97"))
Stacking Tray	Equipped as standard
Side guide	Manual setting
Cutting position setting	Manual setting
Error detection	Paper jam, Safety cover open
Optional equipment	Connection kit for USF-W
Paper feed system	Upper and lower belts
Dimensions	With stacker - 628(W) x 1,003(D) x 601(H)mm (24.7" x 39.5" x 23.7") Without stacker - 628(W) x 693(D) x 601(H)mm (24.7" x 27.3" x 23.7")
Net Weight	112kgs(247lbs.)
Power source	100, 117 or 230vac 50 or 60hz, Single phase

Specifications are subject to change without notice.

Uchida Automatic Bookletmaker

USF-3100

Realized the highest speed in this class and greatly improved productivity in bookletmaking work. Emphasis is placed on easiness and flexibility to use.



Manual feed tray

When using a bookletmaker alone, or in the case of the booklet maker work for a small lot even if linked up to the collator, the booklet maker work can be readily performed with the manual insertion slot in the upper part of the machine.



USF-3100

Specification	European version	U.S. Version
Type	Automatic / semiautomatic size change	
Format	Saddle stapling & folding, corner stapling, side stapling	
Staple cartridge	5000	
Number of heads	1 or 2 heads (2 heads are equipped as standard accessory)	
Speed	2,200 sets / hour	
Stapling capacity	20 sheets of A3 paper (80g/m ²), Flat clincher standard	
Folding capacity	25 sheets of A3 paper (80g/m ²)	
Paper quality	60 to 160g/m ² (210g/m ² for a single cover sheet)	
Paper size	Max. : 328(W) x 457(L)mm Min. : 182(W) x 257(L)mm(120(W) x 210(L)mm when optional guides for the CD size is used)	Max. : 12.9"(W) x 18.0"(L) Min. : 4.72"(W) x 8.27"(L)(4.72"(W) x 8.27"(L) when optional guides for the CD size is used)
Staple pitch	68, 128, 200, 260mm	
Automatic paper size setting	●SR-A3(320 x 450mm) ●A3 ●A4 ●A5 ●CD jacket	
Manual paper size setting	Up to 4 paper sizes can be stored in addition to automatic setting	
Detections	Empty stapling, no staple, paper jam, paper detection at paper feed section, paper gate & paper ejection	
Error indication	paper jam, no staple, empty staple and feed error	
Power source	110, 115, 230, or 240VAC/50 or 60Hz	120VAC, 60Hz, Single phase
Power consumption	166W	
Dimensions : In operation	1015(W) x 620(D) x 740(H)mm	40.0"(W) x 24.4"(D) x 29.1"(H)
When stored	520(W) x 620(D) x 740(H)mm	20.5"(W) x 24.4"(D) x 29.1"(H)
Net weight	172lbs	
Optional accessories & supplies	●Paper guide for the CD jacket size ●Left and right paper guides for corner stapling ●Staple cartridge (5,000staples/cartridge)	

Specifications are subject to change without notice.

Uchida Wire Stitching Booklet maker



USF-W

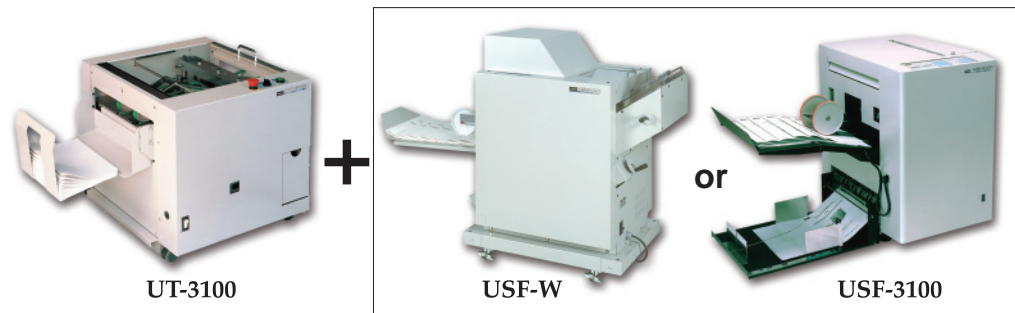
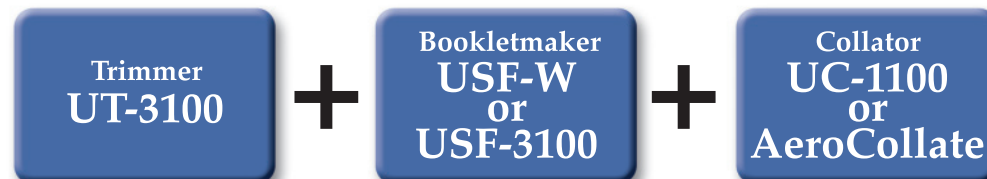
Adopting a wire stitch system, USF-W exceptionally reduces its running cost comparing with cartridge staple type. Side and back joggling assures quality booklet making. The stitching speed is highest in this class, which largely improves production efficiency. USF-W is designed to link up with AeroCollate or UC-1100 collator electrically.

USF-W

Type	Compact wire stitcher & folder
Format	Saddle stitching & folding, Corner stitching, Side stitching
Number of heads	2
Speed	2,500 set/hour (when independently run with A4 size)
Stitching type	Squarely flat stitching (5 preset flat clinchers)
stitching capacity	24 sheets of 80g/m ² offset paper
Wire spool	2 rolls comes as standard
Folding capacity	24 sheets of 80g/m ² offset paper
Sidejoggling	By side guides
Back joggling	By back jogger (adjustable position)
Paper quality	60 to 160g/m ² (210g/m ² for a single cover sheet)
Paper size	Max: 330(W) x 470(L) mm 13.0"(W) x 18.5"(L) Min: 120(W) x 210(L) mm 4.7"(W) x 8.3"(L)
Stitching pitch	70 mm, 140 mm and 120 mm (2.8", 5.5" and 4.7")
Paper size setting	Manual setting
Error detections	Paper jam, Cover open
Error indication	Paper jam, Cover open, Collator error
Power source	117, 230VAC, 50 or 60Hz
Power consumption	650W
Dimensions	1,350(W) x 550(D) x 980(H) mm 53.1"(W) x 21.7"(D) x 38.6"(H)
Net weight	135Kg(298lbs.)

Specifications are subject to change without notice.

Uchida Collator system Combination



For link machines, Optional Connection Kit is required

Optional Equipment for UC-1100

Stapler & Puncher

SP-22

The stapler and puncher greatly simplify the stapling and punching of sets of collated sheets. The stapling position can be adjustable easily using the changeover lever to match the paper size.



Stapler & Puncher SP-22

Paper size	A3, B4, A4, B5	
Paper quality	52 to 128g/m ²	
Speed	Stapling	14 sets/min.
	Stapling & punching	11 sets/min.
Stapling position	Upper left corner of paper	
Puncher	Number of holes	2 holes
	2 hole distance	80mm
	Hole diameter	6.0mm
	Hole position	Longitudinal side of A4 or A5 Shorter side of B4 or A3
Power source	110, 117, 220, 230 or 240VAC, 50 or 60Hz	
Power consumption	55W	
Dimensions	660(W) x 390(D) x 160(H) mm (26.0"(W) x 15.4"(D) x 6.3"(H))	
Weight	19Kg (41.9lbs)	
Options	• Table for SP-22:	496(W) x 370(D) x 550(H) mm 6.2Kg (19.5"(W) x 14.6"(D) x 21.7"(H)) (13.7 lbs)
	• Staple cartridge: 5,000 staples/cartridge	

Transport unit for Twin tower use

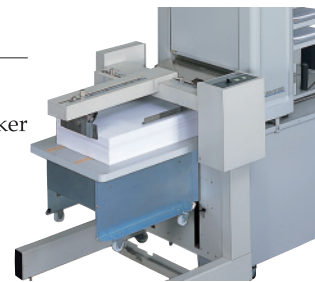
Paper size	Maximum size 328 x 469 mm (12.9" x 18.5") Minimum size 95 x 150 mm (3.8" x 5.9")	Power source	Mechanical gear linkage to UC-1100
Paper quality	35 to 210g/m ²	Dimensions	680(W) x 390(D) x 130(H) mm (26.8"(W) x 15.4"(D) x 5.1"(H))
Max. speed	33 sets/min. (A4 paper) 26 sets/min. (when ST-31 is connected)	Weight	6Kg (13.2lbs)

Specifications are subject to change without notice.

Large capacity stacker

ST-31

The convenient large capacity stacker can effortlessly stack up to 3,200 collated sheets (64g/m² stock) in a straight or offset manner.



Large capacity stacker ST-31

Paper size	Maximum size 328 x 469 mm (12.9" x 18.5") Minimum size 148 x 210 mm (5.8" x 8.3")
Paper quality	50 to 210g/m ²
Stacking system	Straight or offset (25mm distance) stacking
Speed (A4 paper)	With single tower High speed: 42 sets/min. Low speed: 32 sets/min. With twin tower High speed: 27 sets/min. Low speed: 20 sets/min.
Stacking capacity	320mm(12.6")
Error detection	Paper jam at paper drive unit, paper on dolly full, no start position of dolly, no dolly, automatic stop when collator made error
Power source	110, 117, 220, 230 or 240VAC, 50 or 60Hz
Power consumption	50W
Dimensions	Main body 698(W) x 615(D) x 805(H) mm (27.5"(W) x 24.2"(D) x 31.7"(H)) Paper drive unit 426(W) x 185(D) x 90(H) mm (16.8"(W) x 7.3"(D) x 3.5"(H))
Weight	Main body 51Kg (112.4lbs) Paper drive unit 2.7Kg (6.0lbs)

UCHIDA YOKO CO., LTD.

9-15, Shiomi 2-Chome, Koto-ku, Tokyo, 135-8730 JAPAN
TEL:81-3-5634-6350
FAX:81-3-5634-6857
URL: <http://www.uchida.co.jp/overseas/>
E-mail: overseas@uchida.co.jp

UCHIDA

AFTER-PRINTING EQUIPMENT

Booklet System

NEW Uchida Air Collator AeroCollate

Uchida new belt suction paper collator model AeroCollate can collate various types of paper such as offset, coated, digital printed papers, and etc by its uniquely designed belt suction feeding system.

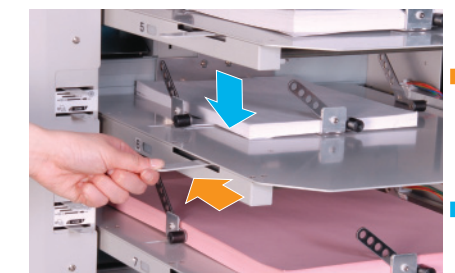
In addition, this machine can be extended up to 3 towers and can be linked up with Uchida bookletmaker and trimmer. Due to these features, AeroCollate can meet with your various collating applications and provide best solution to you.



LED Lamp for each tray

Indication	Phenomenon
1 Lit in Red	Paper jam
2 Flash in Red	Double feed
3 Lit in Red 3 times	Paper feed gap
4 Lit in Green	No Paper
5 Lit in Green 3 times	Paper slip

You are able to check errors on each bin by LED lamp very easily.



Easy paper setting

There are movable paper feed lever on both side of the paper tray. Set up easily setting from CD size up to over A3 size.

Also you are able to make the space between bins when you stack the paper each bins by press the button.

AeroCollate Specification

Number of station	8 stations
Max. Paper Size	364 x 515 mm
Min. Paper size	120 x 210 mm
Paper Feed system	Upper Belt suction driving system
Paper quality	Offset, Glossy, Digital printed papers, Recycled paper and NCR paper (option)
Max. loading capacity	50 mm / bin
Processing speed	1,000 set / hour - 4,000 set / hour(A4 size, Portrait feeding)
Paper weight	Coated paper : 73.3g/m ² - 300g/m ² Offset paper : 45.0g/m ² - 300g/m ²
Max. stacking capacity	90 mm
Stacking system	Straight / Criss-Cross (Selectable)
Counter	Ten key, LED Display, Error indicator
Table elevation	Automatic table elevation
No paper detection	Equipped
Empty feed detection	Equipped
Paper Jam detection	Equipped
Double feed detection	Equipped
Stacker full detection	Equipped
Tower Connection	Up to three towers (Max. speed of three towers may be around 2,000/hr - 3,000/hr)
Finisher connection	USF-3100 / USF-W and UT-3100
Overlapping	Equipped
Alternate function	Equipped
Insertion mode	Equipped
Total counter	Equipped
Weight	252kg
Dimensions	950(W) x 720(D) x 1,960(H)mm

Remarks : Specifications are subject to change without notice.



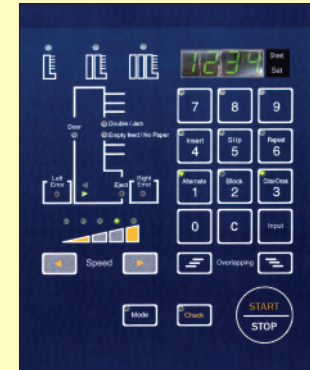
Low Power Consumption ECO

Our New AeroCollate needs very little electricity to work. Required only 300W to operate the machine with using whole 8bins.

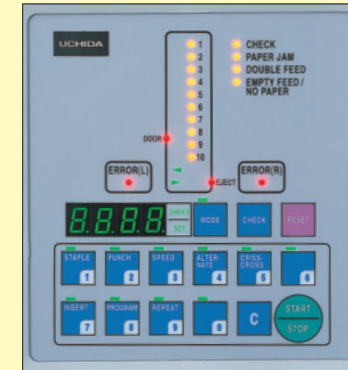
Mutual Function for Uchida Collator

User-friendly operation panel

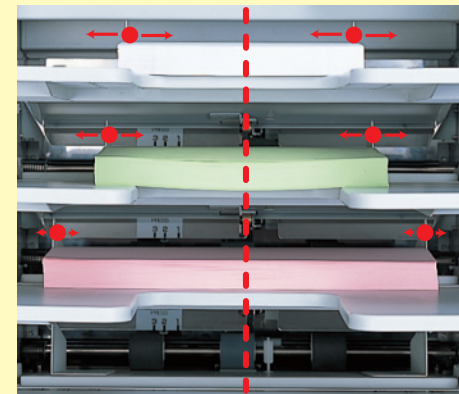
AeroCollate



UC-1100



The operation panel has been upgraded and redesigned to make work easier. It shows the status of operation in any operation mode. Also, errors and their locations are indicated for quick corrective action.



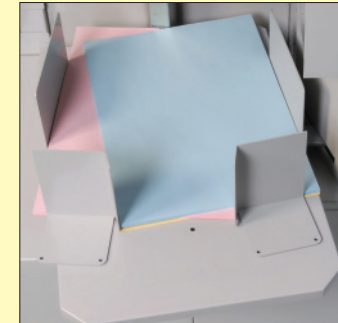
Center

Center Setting

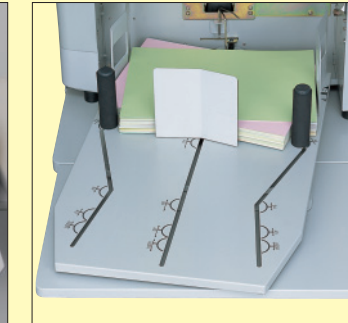
The paper is set in the center position on the feed tray by the centering guides, which eliminates the need to re-position the booklet maker and trimmer when different size paper is used.

Stacking table for various paper sizes

AeroCollate



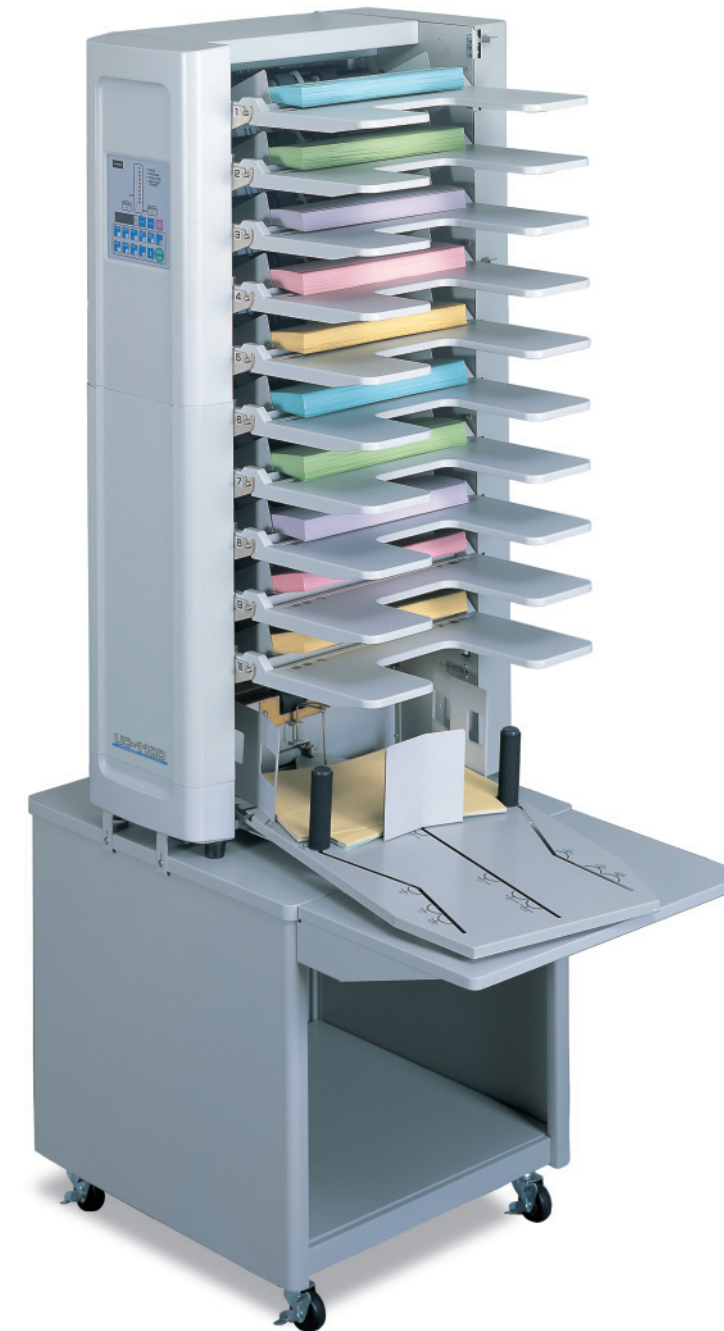
UC-1100



The stacking table is redesigned to stack small format paper, such as A5 paper, without attaching an auxiliary table. It alternately shifts direction in a crisscross pattern that can stack large sized stock, such as SRA3 paper, more efficiently than conventional offset stackers.

Uchida Table Top Collator UC-1100

Uchida Collator UC-1100 efficiently collates a wide variety of papers at the maximum cost performance. The center feed system eliminates the need to re-position the booklet maker and trimmer each time the paper size is changed. You can now install the system in a permanent station. Naturally, Uchida's reliable paper feed system, proven throughout the world, has been kept in the same precise structure as it is constructed. The UC-1100 can also be connected by signal with major booklet makers available in the market. It is suitable not only for professional printer applications but also for in-house printing, quick copy / print shops, schools, and many other uses.



Quick setting of paper feed pressure

The paper feed pressure lever is relocated on the outside of the UC-1100 so that it enables the operator to adjust the pressure level much easier. The paper feed and separator pressures can be adjusted easily and quickly without detaching the feed tray.

Two collators can be linked

Two Uchida UC-1100 collators can be linked via an optional transport unit, enabling their use in tandem for purposes of collecting a larger number of pages (maximum 20 sheets). The two machines can be used separately while connected.



Detachable large feed tray

The paper feed tray is easily detached to facilitate replacement of the feed roller and separator and removing jammed paper. It is designed longer to be able to load larger format paper, such as SRA3 paper, without requiring an optional auxiliary tray.

UC-1100 Specification

Number of station	10 stations (10 stations x 2 towers connectable)	
Paper size	Maximum size	328 x 469 mm (A3SR) (12.9" x 18.5")
	Minimum size	95 x 150 mm (Post card) (3.8" x 5.9")
Paper quality	1st & 10th station	35 to 210g/m ²
	2nd to 9th station	35 to 160g/m ²
Speed	40 or 60 set/minute selectable (A4 paper)	
Paper feed system	Center feed with friction roller system	
Station capacity	28mm (approx. 350 sheets of 64g/m ² paper) (1.1")	
Paper stacking system	Straight or criss-cross stacking	
stacking capacity	65mm (approx. 880 sheets of 64g/m ² paper) (2.5")	
Counter	Both 4 digits addition and preset subtraction	
Feed error detection	Empty feed, paper jam, double feed, no paper	
Other detection	Stacker full, paper eject jam, back door open, station in use, paper check at each station, after processing unit error by signal relay	
Programming mode	•Alternate collation mode	
	•Insertion mode	
	•Program insertion for slip booklet mode	
	•Program insertion for front and back cover mode	
Connection to booklet maker	Uchida USF-3100 or USF-W	
Power source	110, 117, 220, 230 or 240VAC, 50 or 60Hz	
Power consumption	200W	
Dimensions	545(W) x 740(D) x 1,056(H) mm (21.5"(W) x 29.1"(D) x 41.6"(H))	
Weight	76Kg (167.5 lbs)	
Standard accessories	Paper feed table, Straight/Criss-Cross stacker	
Optional accessories	•Height Fixed collator table	860(W) x 520(D) x 550(H) mm, 18.8Kg (33.9"(W) x 20.5"(D) x 21.7"(H) mm, 41.4 lbs)
	•Collator table	860(W) x 520(D) x 720(H) mm, 21.1Kg (33.9"(W) x 20.5"(D) x 25.6 to 27.6"(H), 46.5 lbs)
	•Connecting cable with connector for booklet makers	